

**MAP4K1 Antibody**  
**Purified Rabbit Polyclonal Antibody (Pab)**  
**Catalog # AP22439a****Specification**

---

**MAP4K1 Antibody - Product Information**

Application	WB,E
Primary Accession	<a href="#">O92918</a>
Reactivity	Human
Host	Rabbit
Clonality	polyclonal
Isotype	Rabbit Ig
Calculated MW	91296

**MAP4K1 Antibody - Additional Information****Gene ID** 11184**Other Names**

Mitogen-activated protein kinase kinase kinase kinase 1, 2.7.11.1, Hematopoietic progenitor kinase, MAPK/ERK kinase kinase kinase 1, MEK kinase kinase 1, MEKKK 1, MAP4K1, HPK1

**Target/Specificity**

This MAP4K1 antibody is generated from a rabbit immunized with a KLH conjugated synthetic peptide between amino acids from the human region of human MAP4K1.

**Dilution**

WB~~1:1000

E~~Use at an assay dependent concentration.

**Format**

Purified polyclonal antibody supplied in PBS with 0.09% (W/V) sodium azide. This antibody is purified through a protein A column, followed by peptide affinity purification.

**Storage**

Maintain refrigerated at 2-8°C for up to 2 weeks. For long term storage store at -20°C in small aliquots to prevent freeze-thaw cycles.

**Precautions**

MAP4K1 Antibody is for research use only and not for use in diagnostic or therapeutic procedures.

**MAP4K1 Antibody - Protein Information****Name** MAP4K1 ([HGNC:6863](#))**Synonyms** HPK1**Function** Serine/threonine-protein kinase, which plays a role in the response to environmental

stress (PubMed:[24362026](#)). Appears to act upstream of the JUN N-terminal pathway (PubMed:[8824585](#)). Activator of the Hippo signaling pathway which plays a pivotal role in organ size control and tumor suppression by restricting proliferation and promoting apoptosis. MAP4Ks act in parallel to and are partially redundant with STK3/MST2 and STK4/MST2 in the phosphorylation and activation of LATS1/2, and establish MAP4Ks as components of the expanded Hippo pathway (PubMed:[26437443](#)). May play a role in hematopoietic lineage decisions and growth regulation (PubMed:[24362026](#), PubMed:[8824585](#)). Together with CLNK, it enhances CD3-triggered activation of T-cells and subsequent IL2 production (By similarity).

#### **Tissue Location**

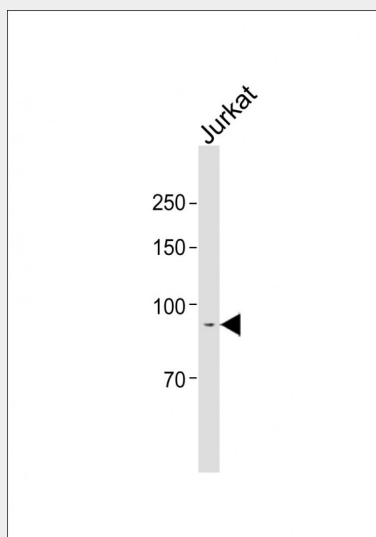
Expressed primarily in hematopoietic organs, including bone marrow, spleen and thymus. Also expressed at very low levels in lung, kidney, mammary glands and small intestine

#### **MAP4K1 Antibody - Protocols**

Provided below are standard protocols that you may find useful for product applications.

- [Western Blot](#)
- [Blocking Peptides](#)
- [Dot Blot](#)
- [Immunohistochemistry](#)
- [Immunofluorescence](#)
- [Immunoprecipitation](#)
- [Flow Cytometry](#)
- [Cell Culture](#)

#### **MAP4K1 Antibody - Images**



All lanes: Anti-MAP4K1 Antibody at 1:1000 dilution + Jurkat whole cell lysate Lysates/proteins at 20 µg per lane. Secondary: Goat Anti-Rabbit IgG, (H+L), Peroxidase conjugated (ASP1615) at 1/15000 dilution. Observed band size: 91 KDa Blocking/Dilution buffer: 5% NFDM/TBST.

#### **MAP4K1 Antibody - Background**

Serine/threonine-protein kinase, which may play a role in the response to environmental stress (PubMed:[24362026](#)). Appears to act upstream of the JUN N-terminal pathway (PubMed:[8824585](#)). May play a role in hematopoietic lineage decisions and growth regulation (PubMed:[8824585](#),

PubMed:24362026). Able to autophosphorylate (PubMed:8824585). Together with CLNK, it enhances CD3-triggered activation of T-cells and subsequent IL2 production (By similarity).

#### **MAP4K1 Antibody - References**

Hu M.C.-T.,et al.Genes Dev. 10:2251-2264(1996).  
Grimwood J.,et al.Nature 428:529-535(2004).  
Oppermann F.S.,et al.Mol. Cell. Proteomics 8:1751-1764(2009).  
Mayya V.,et al.Sci. Signal. 2:RA46-RA46(2009).  
Burkard T.R.,et al.BMC Syst. Biol. 5:17-17(2011).